

# Magnetic Stripe Reader Specifications



**Model: MSR580**

MSR580 is Tree-track magnetic stripe reader, dedicated to reading and transmitting the card information. They are the one that this product uses the F2F decoder and data transmission. It complies with ISO or ANSL technical standards, and supports bi-directional swipe. Not only simulation keyboard output, but also plug and play without drivers.

## 1 Parameter

Items	Detail	Items	Detail
Standard	ISO7810-7813	Method	USB
Rate	15~120cm/sec	Head Life	≥800,000
Operating Voltage	DC 5V±5%	Operating Current	≤50mA
Status Tips	LED(Optional Buzzer)	Material	ABS
Card Thickness	PVC 0.76±0.08mm	Track Width	1.5mm
Size(Product)	91.4mm×27.6mm×28.2mm	G W	100G
Size (Package)	138.7mm×67mm×41.4mm	N W	80G
Indicators	LED and Buzzer	Wire length	1420mm
Remark			
Track Position	ISO1(1ATA)	ISO2(ABA)	ISO3(MINTS)
Recording Density	210BPI	75BPI	210BPI
Number of Characters	79	40	107
Operating System	Windows XP、Windows7、Windows10、Android、Linux etc.		

## 2 Feature

- Users can set the start and end symbol, Enter, Beeper or character replacement by themselves.
- Low power without external power, powered directly through USB port of the PC.
- The unique design, low error rate and supports bi-directional swipe when using.
- Long head life, suitable for high-load job.
- Self-test before operating.
- Bright green LED battery means reading successfully (Device with a buzzer will "beep" after success of the device).
- Virtual keyboard output data.

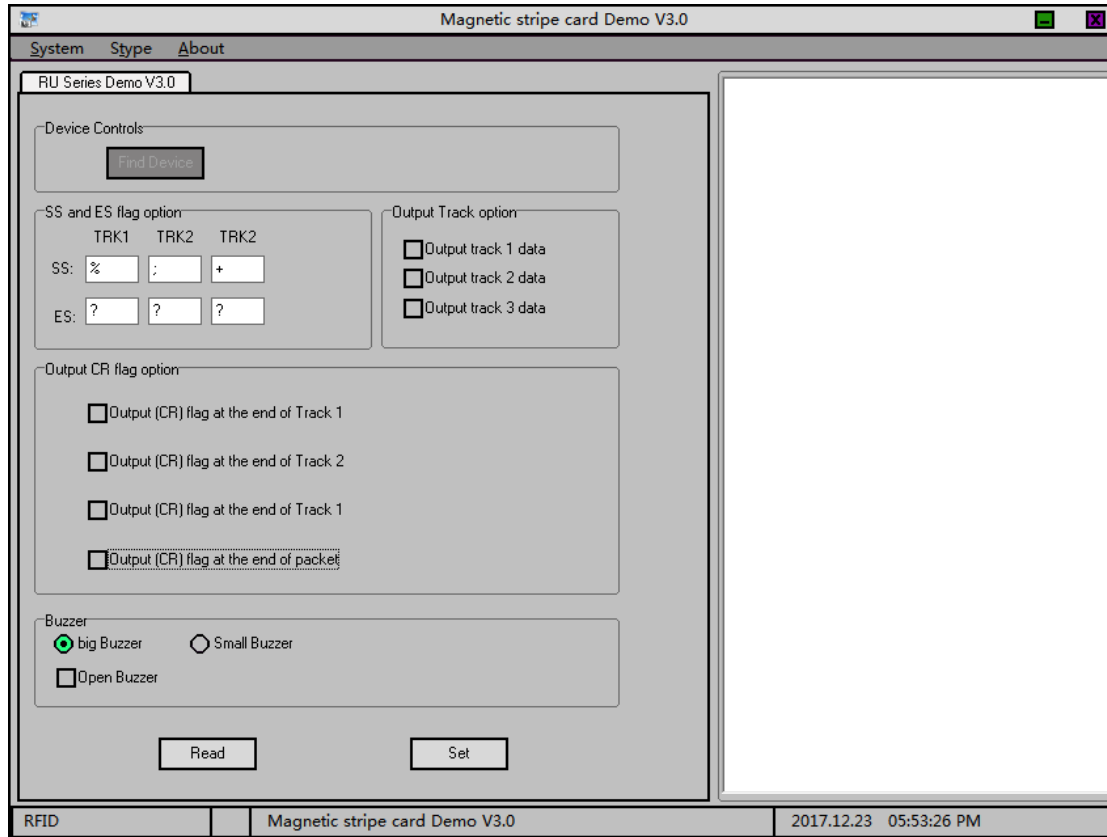
## 3 Setting of information output

User can set up the information output of the magnetic stripe card by device software, such

as track 1, track 2, track 3, full-track or any two of the track. Also they can set the start track symbol, end symbol or enter, as follows:



**Step 1** Connect the device to the PC, double-click the demo ,  
As follow:



**Step 2** User can set up the each track or the track information beginning symbol and the end symbol, as follows.

- **Setting the start symbol and end symbol**

If user has no need of the start and end symbol, please delete the "%", ";", "+", "?" symbol in edit box. As the pictures:



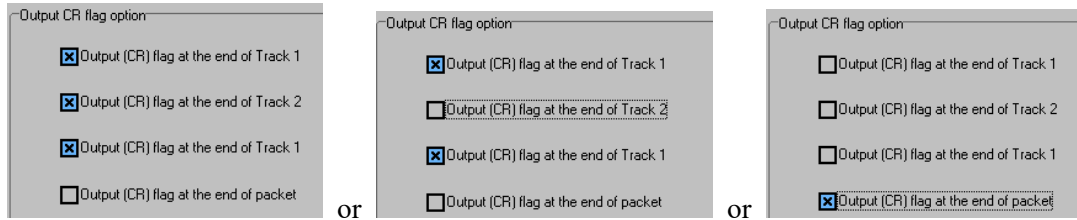
- **Setting the track data**

Such as set the three tracks data(All tracks data), checking the square. As the pictures:



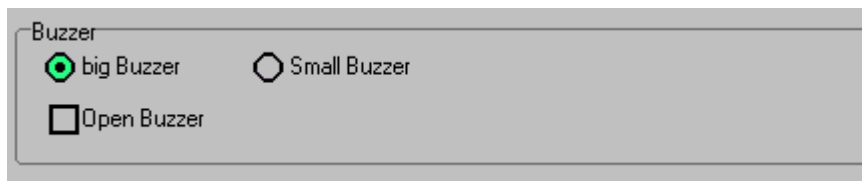
● **Enter after the data**

According to the user’s demand, many ways to choice for data enter.such as single-track, multi-track or full three-track., As the pictures:

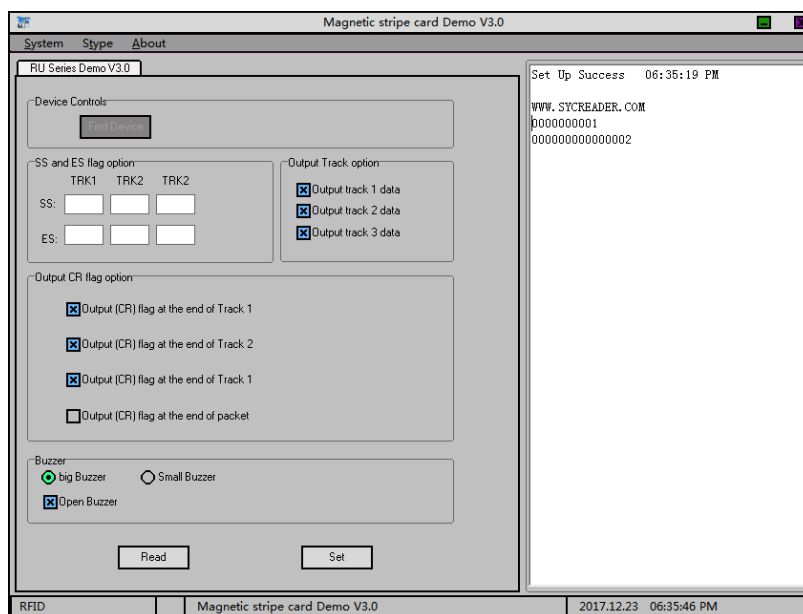


● **Open or close the beeper**

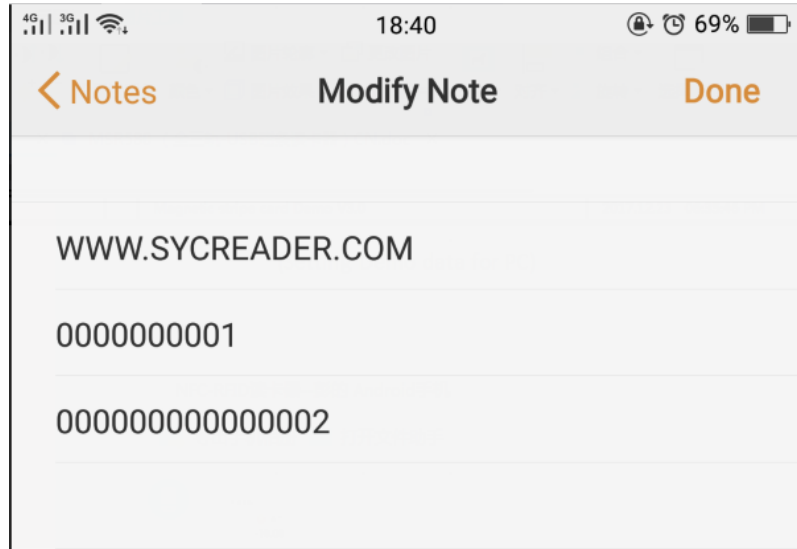
If user don’t want the beeper, close it like this. Don’t check “  Open Buzzer ” option. As follow:



**Step 3** After setting the reader , check” **Set** ”option. The magnetic stripe card through the card reader, then the data of card appears in the preview area of the setting software, also you can open the word, excel or notepad to test. As follow:



(The data in Setting Demo for PC)



(The data in the notes for Android)

#### 4 Applications

The system of bank, POS, VIP management, Query or ID authentication and so on.

#### 5 Pictures

